

# Galaxies

Yuichi Matsuda (NAOJ)

# Conference: SMG20 @ Durham/UK



河野さん

李民主さん

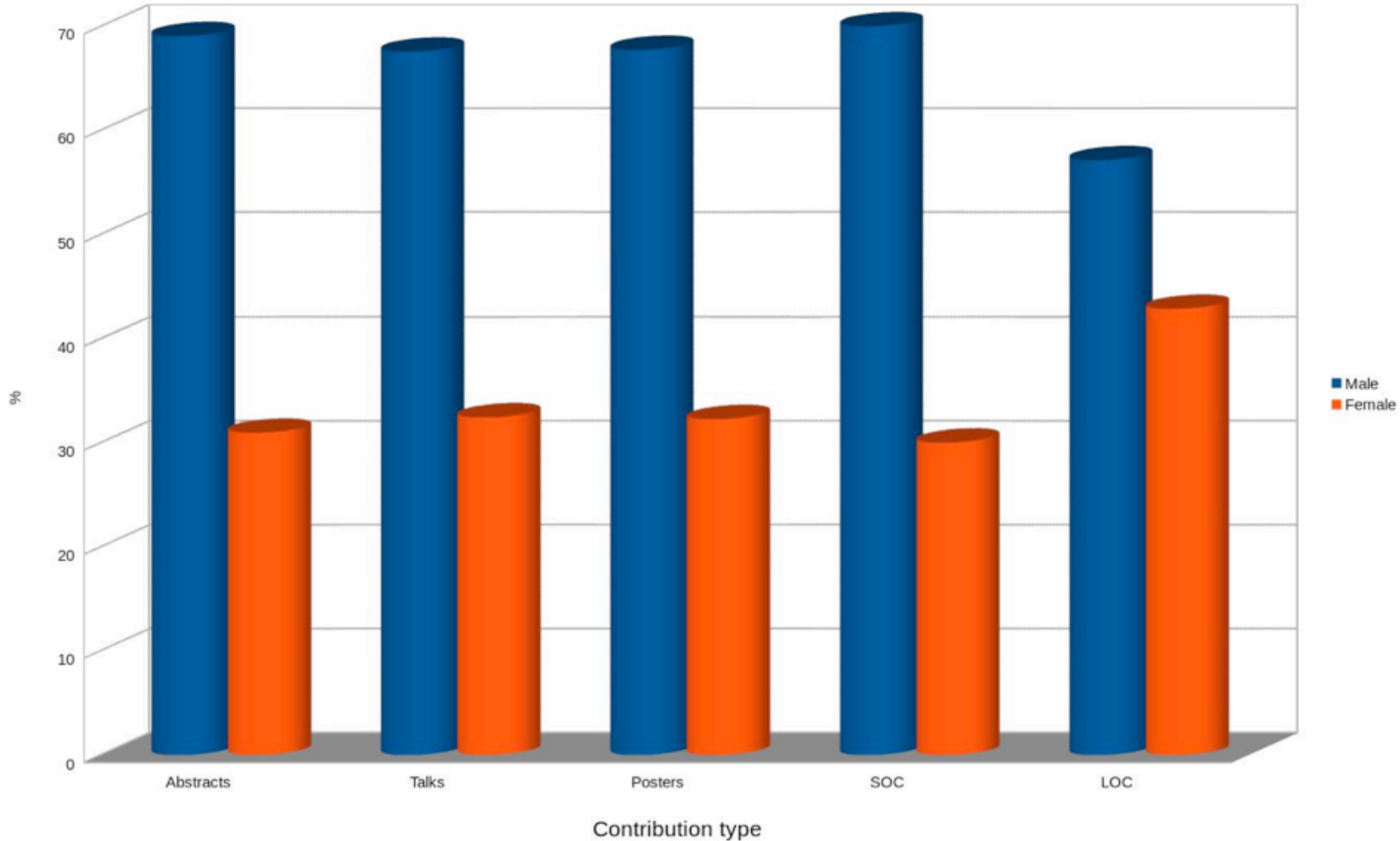
松田

藤本さん

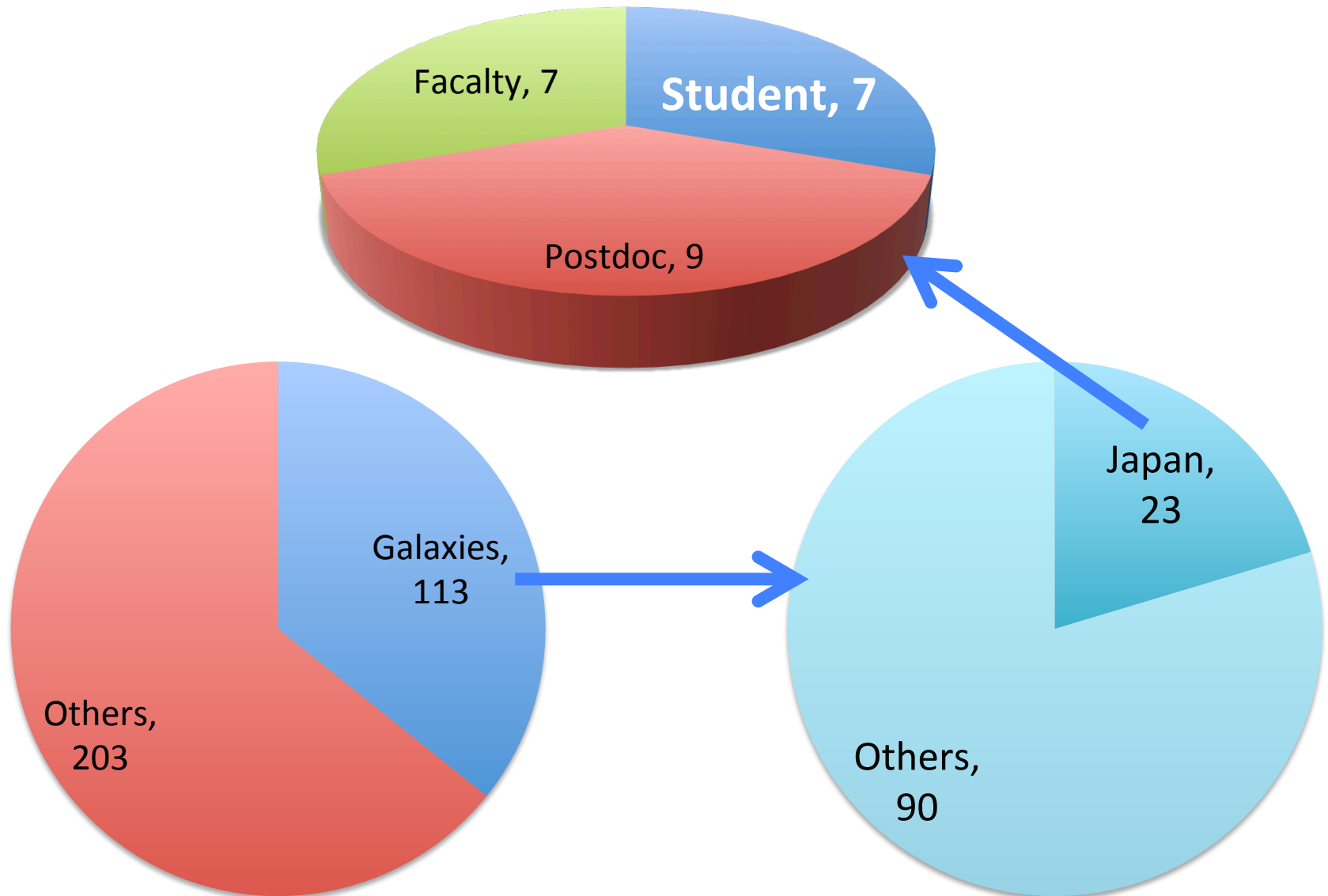
梅畑さん

# Gender Balance → Bright Future

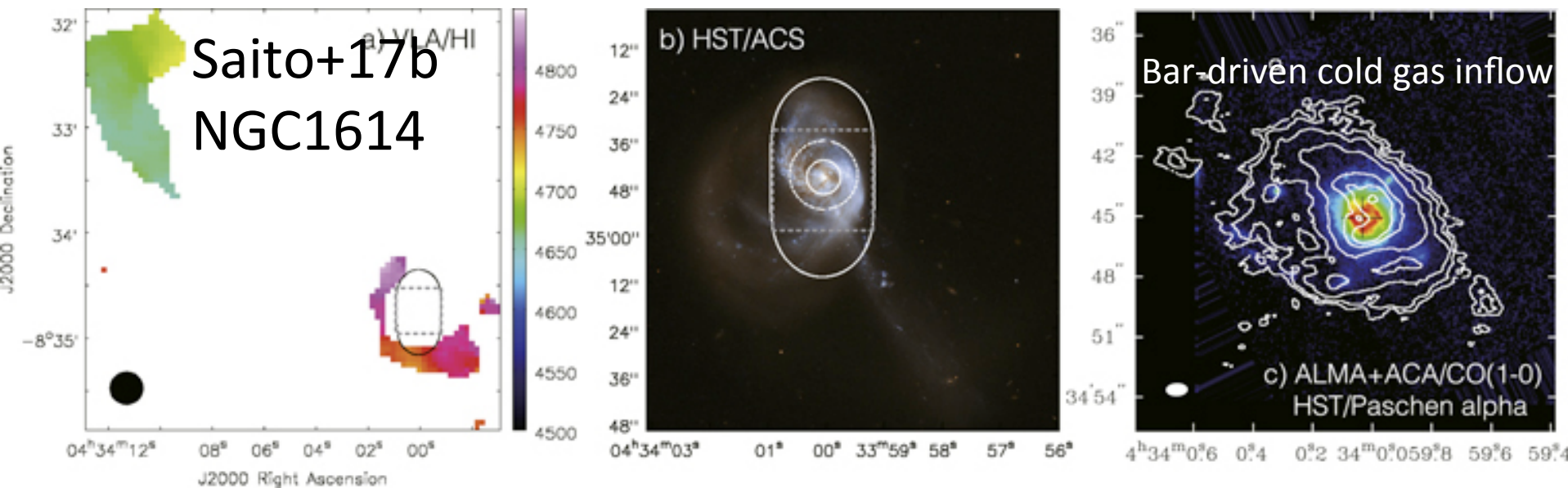
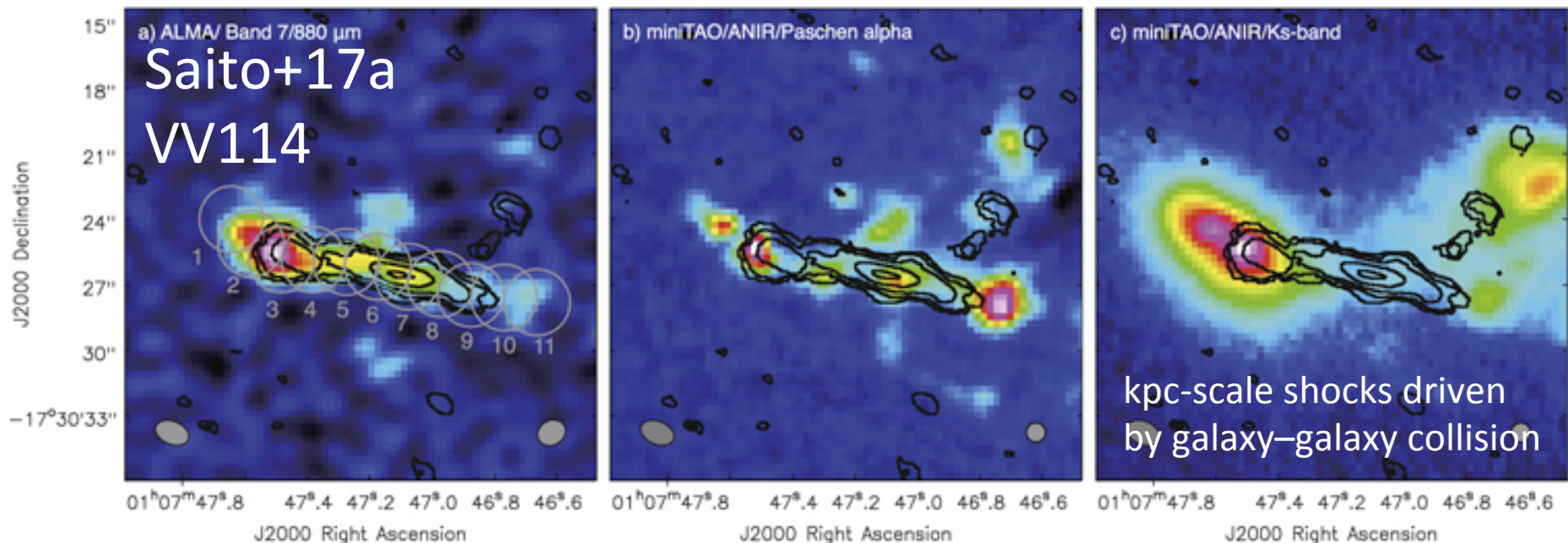
SMG20 Gender Statistics



# ALMA galaxy papers in 2017



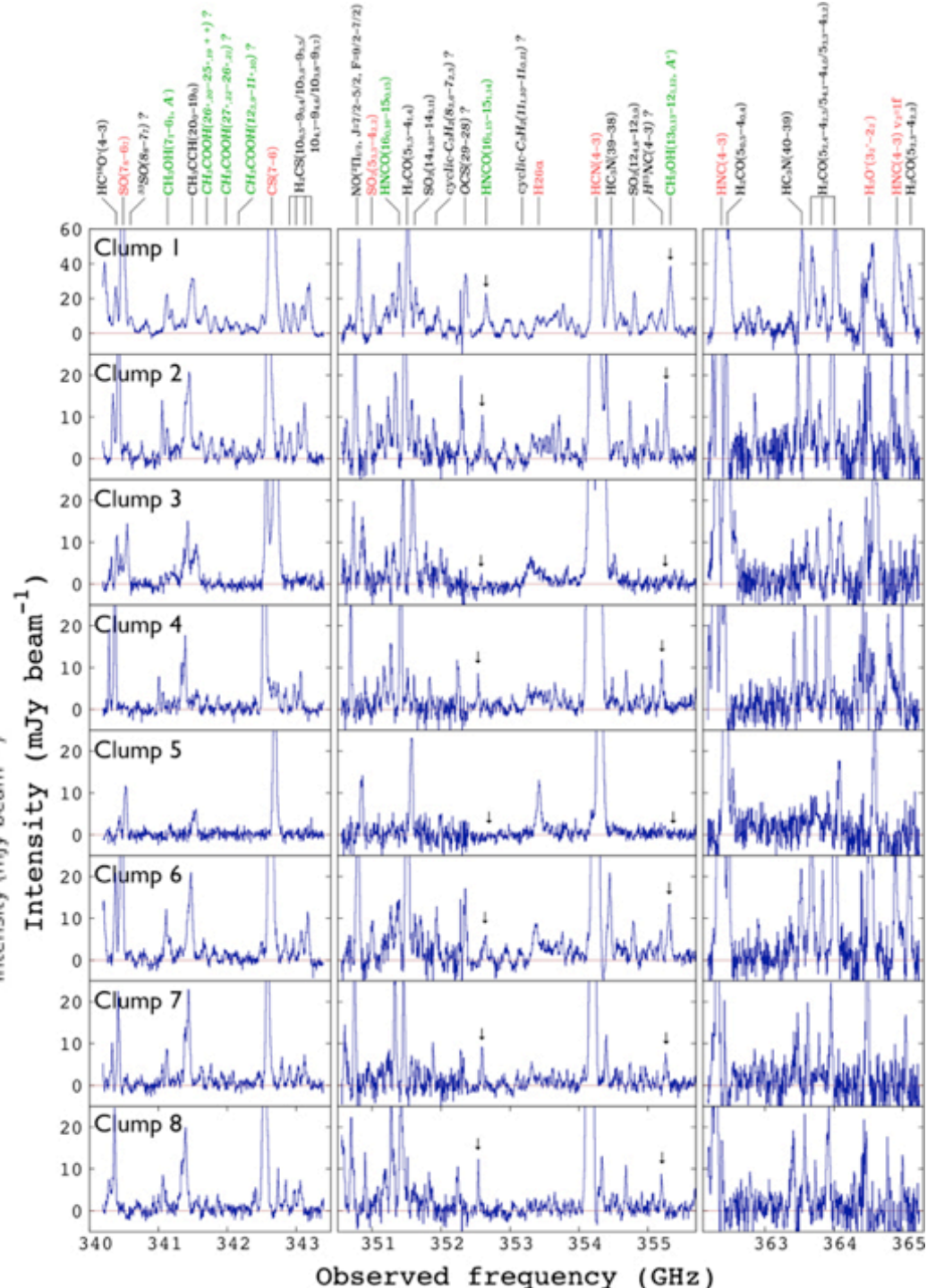
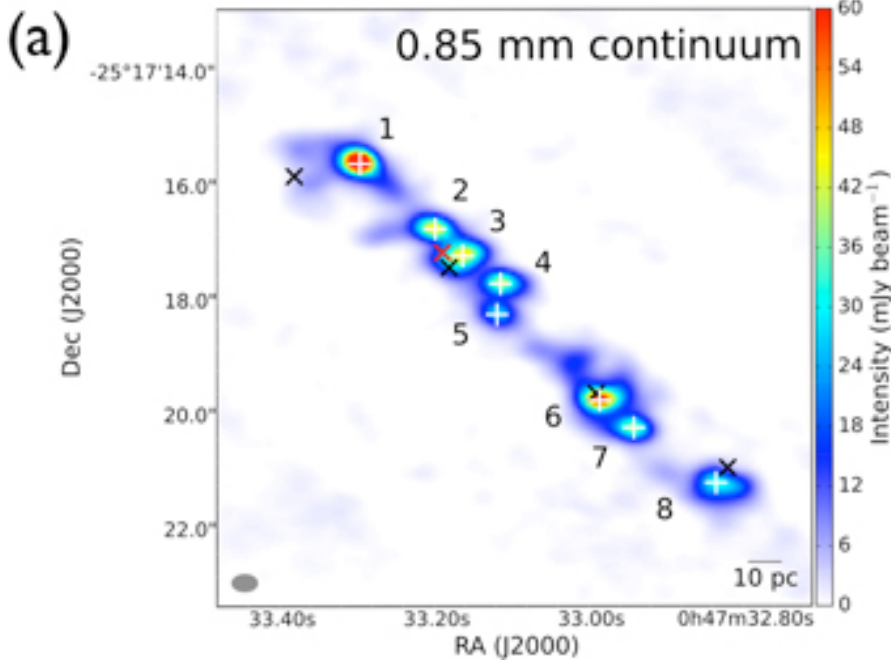
# Local Galaxy (1)



# Local Galaxy (2)

## Ando+17 NGC253

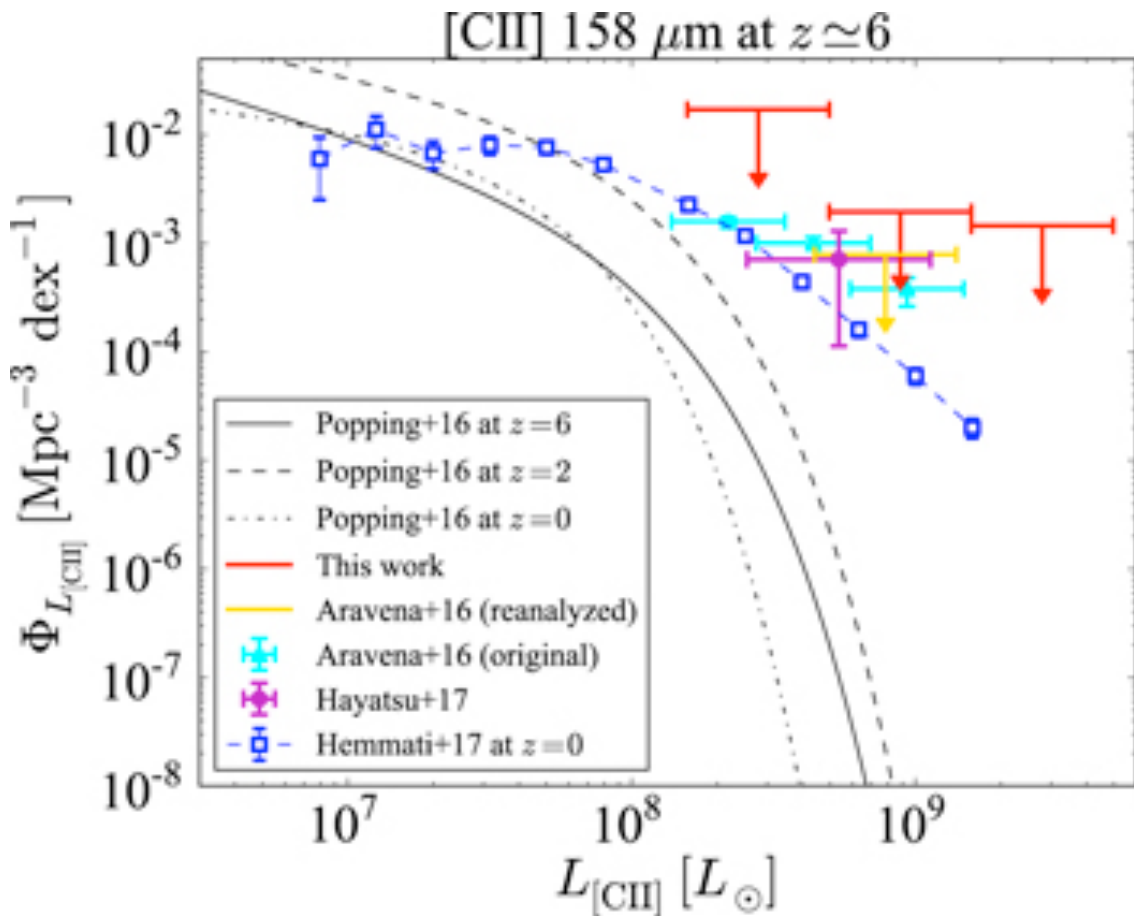
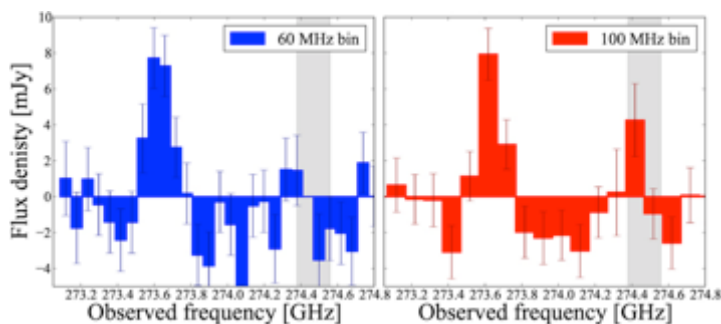
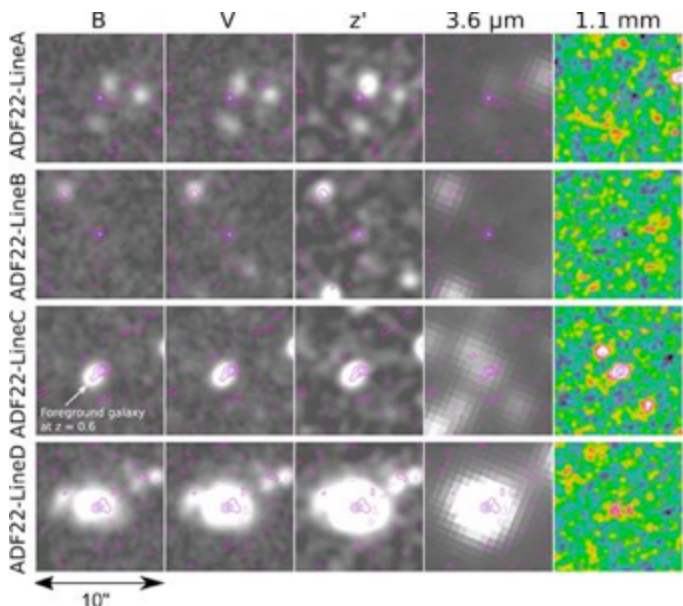
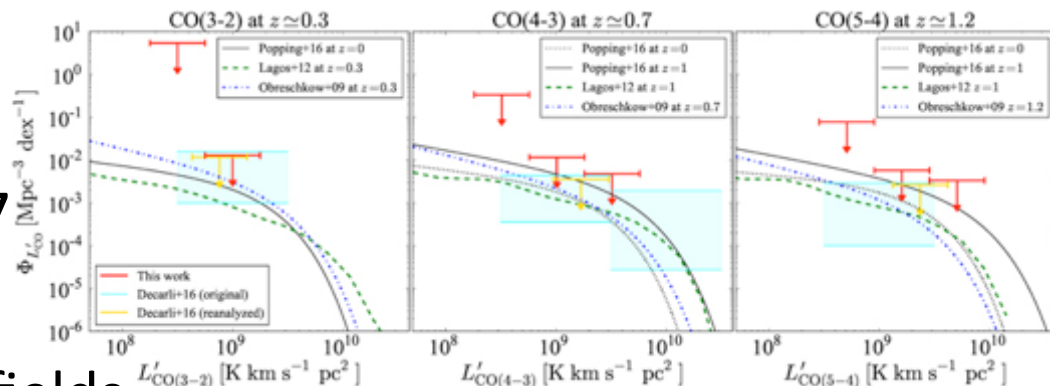
hot and chemically rich environments  
within 10-pc-scale star-forming clumps



# High-z Galaxy (1)

Hayatsu+17, Yamaguchi+17

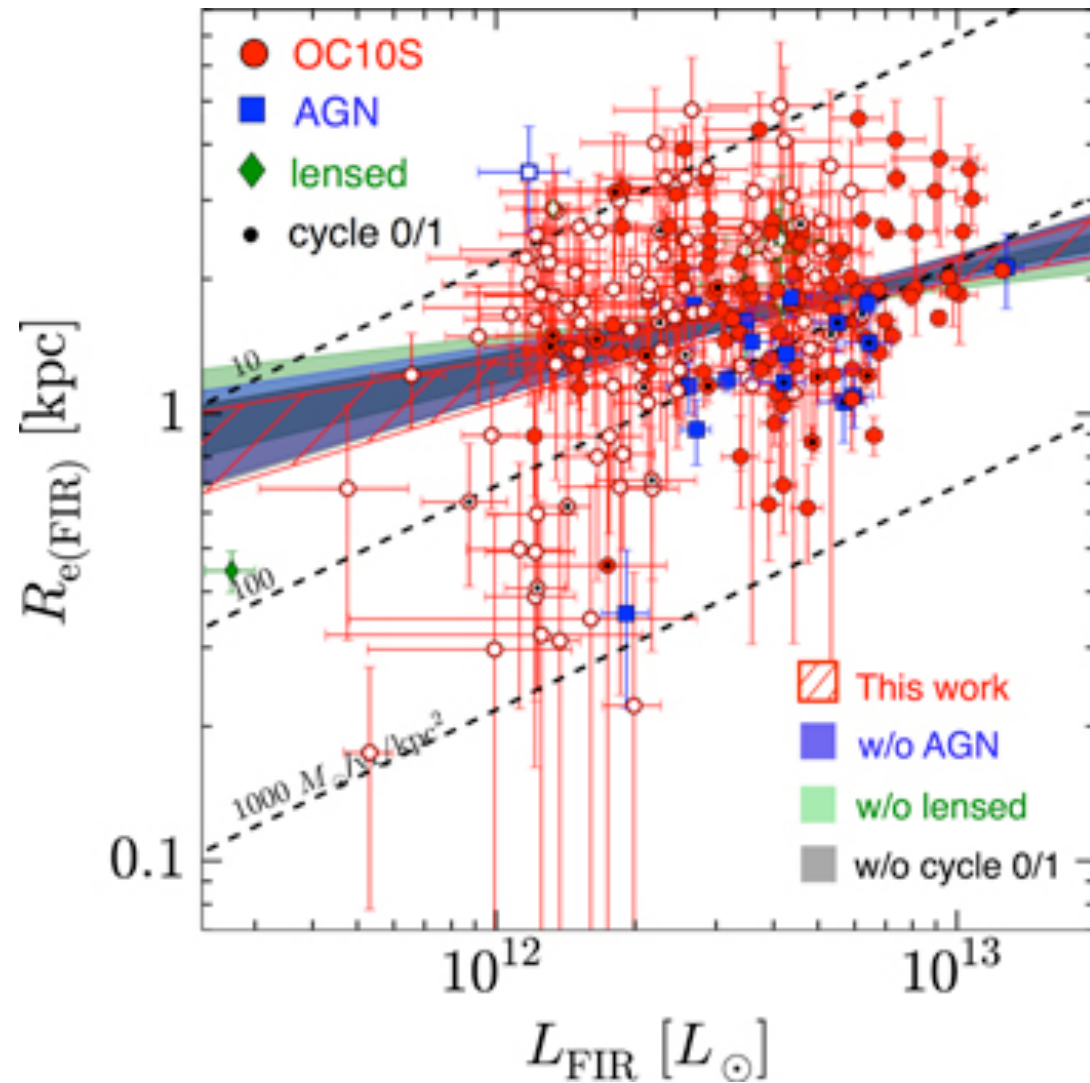
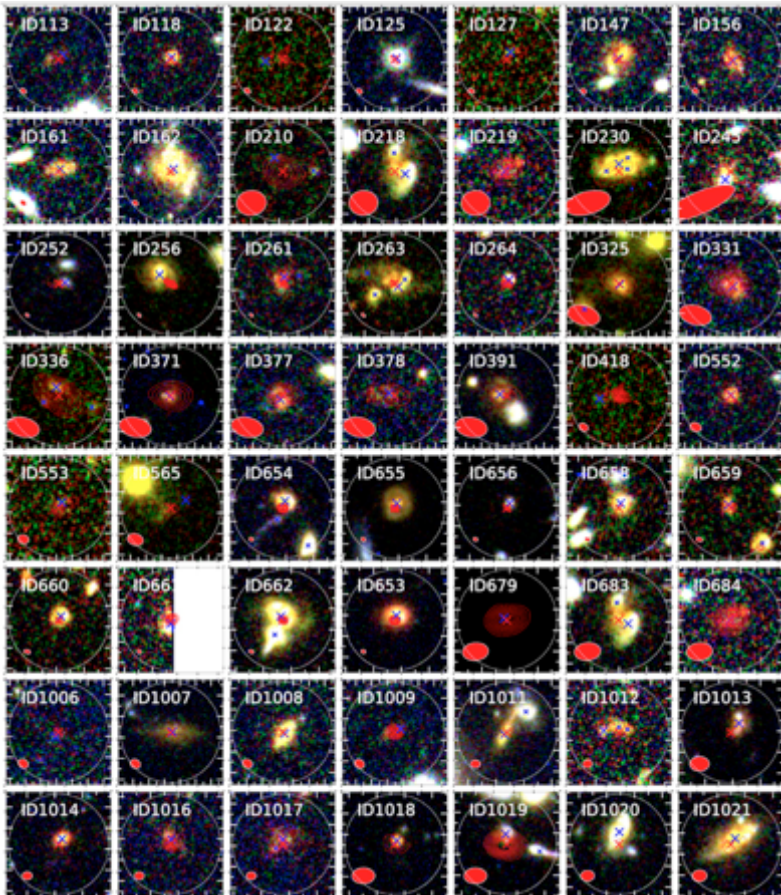
Blind emission-line surveys  
in blank fields / lensing cluster fields



# High-z Galaxy (2)

Fujimoto+17

size measurement of  
~1000 ALMA sources

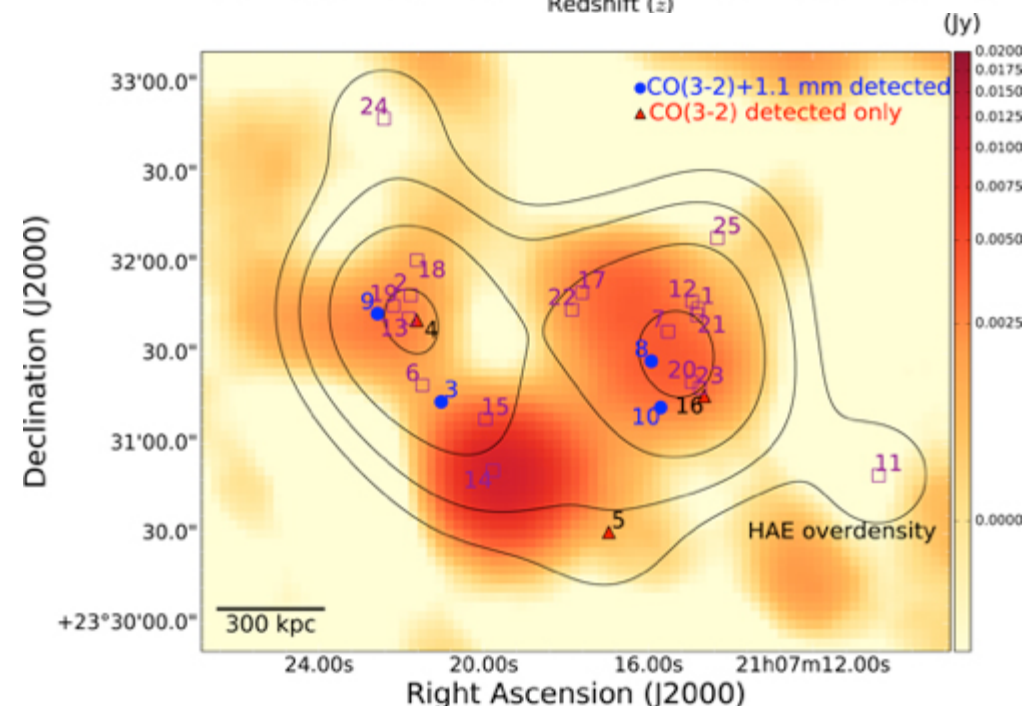
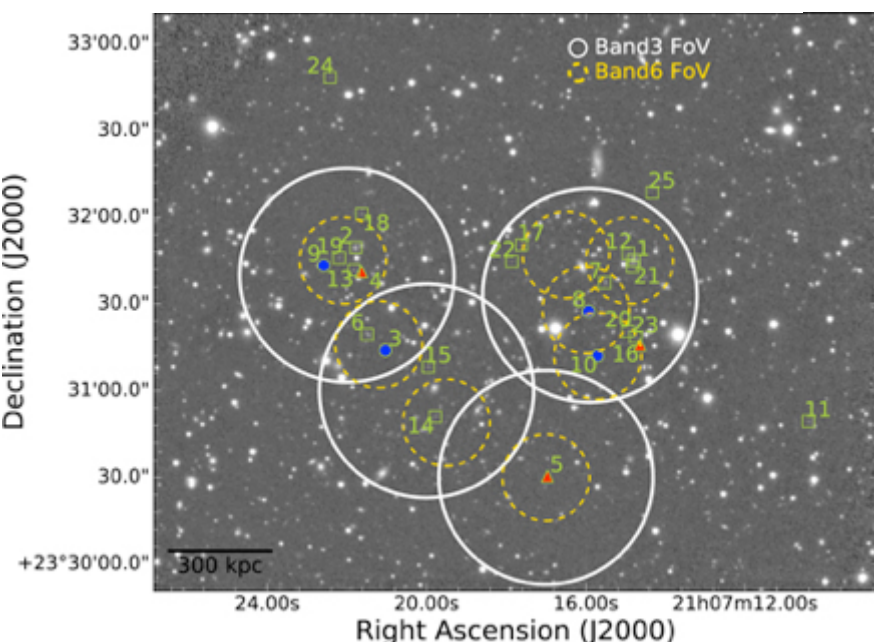
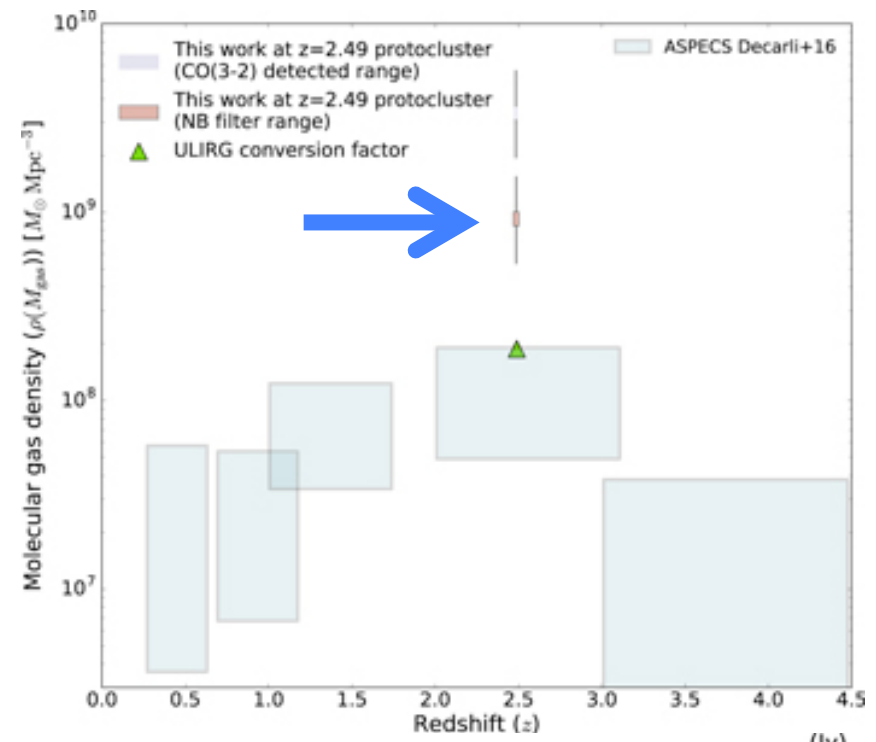
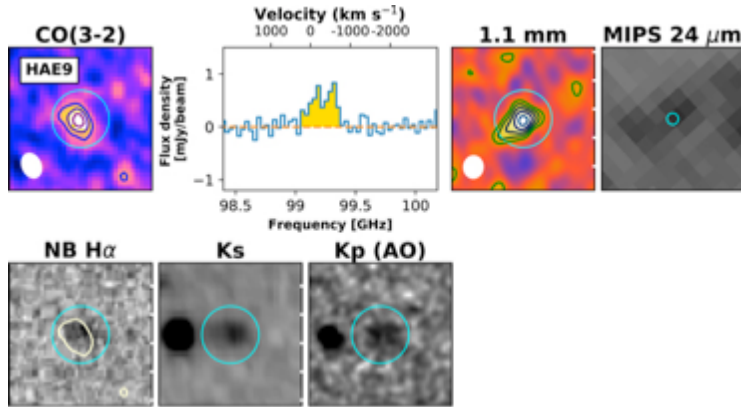




# High-z Galaxy (3)

Lee+17 z=2.5 Protocluster

CO emitter concentration



# Summary

- Reasonable gender balance may promise our bright future of this research area
- We have many excellent student papers but all of them are students of U. Tokyo.